

Designing our common space

October 2023

commons / **space**

Our story and vision

commonspace because we design and study the shared/common public space as a node between society, infrastructure and the environment. For us, the planning and management of public space is a “common” research field in which “we are active”.

commonspace because at the heart of our vision lay community and space as complex and multifaceted concepts. We perceive space not only as the recipient of human activities but as a unity that is being transformed by environmental, social, political and economic factors. The challenges of today’s era have above all a spatial dimension.

commonspace is a collaborative – interdisciplinary planning and design group that works since 2012. In 2015 was established as a Social Cooperative Enterprise under the name “CPD Creating Spaces” and in 2017 as a Worker Cooperative under its current name. So far, the network has collaborated with Universities, Educational Institutions, Public Benefit Institutions, Municipalities, Regional Governments, NGOs and various Enterprises. We have designed and fulfilled projects, studies and programs funded by various public and private institutions. Furthermore, we have developed scientific work and voluntary action on issues related to urban conflicts and social movements, (critical) sustainable development and environmental protection.

commonspace provides high quality services in the fields of Spatial Strategies, Architecture, Social Research, Urban and Environmental Design and Participatory Planning by creating/ implementing innovative tools and processes. It seeks to be a link between citizens, social institutions and public authorities, a hub for the exchange of knowledge, ideas and practices among citizens, experts and decision-makers.



Our team



Eleni Mougiakoy
Agricultural Engineer,
PhD Agricultural University



Kostas Vourekas
Architect, Urban
and Regional Planner



Sofia Tsadari
Architect, Urban
and Regional Planner
PhD NTUA



Thanos Andritsos
Architect, Urban
and Regional Planner PhD
NTUA



Dimitris Poulis
Architect, Urban Planner
PhD NTU A



Giouli Athousaki
Business Administration,
Cultural Project Management



Giorgos Velegrakis
MEng Electrical and Computer Eng.
PhD in Geography - Political Ecology



Giannis Paraskevopoulos
Survey-Geoinformatics Eng.
PhD NTUA



Anastasia Christaki
Architect, MSc Urban and
Regional Planning



Melina Vlachou
Architect, Illustrator &
designer



Alikei Kosifologou
PhD Political Science and
Sociology



Dionisia Koutsi
Urban and Regional Planner,
PhD NTUA



Katerina Ventouri
Business Administration



Artemis Koumparelou
Architect, MSc Geography



Sylvain Adam
Architect, Illustrator &
designer



Emmy Karimali
Architect, PhD NTUA

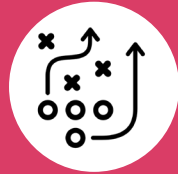
The wide range of commonspace's members and associates create a network of experts and scientists involved in urban development, spatial and environmental planning, combining research work and study projects.

Interdisciplinarity, integrated approach and social interest are at the center of our vision and define our operation and work. The social, spatial, and environmental problems of current times are complex. Therefore, solving them requires the composition of scientific knowledge from several fields. This perspective is reflected in our team, as well as in the wide range of collaborators / ideas with which we approach the special requirements of each project.

Our Services



ARCHITECTURE
URBAN DESIGN



SPATIAL STRATEGIES



PARTICIPATORY DESIGN



GIS | SPATIAL ANALYSIS



RESEARCH | EDUCATION



PLANNING DUE DILIGENCE



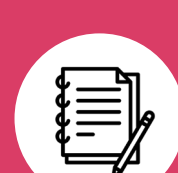
CULTURE | CULTURAL HERITAGE



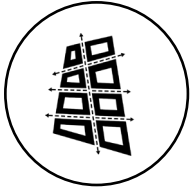
SSE (SOCIAL SOLIDARITY ECONOMY)



PROJECT MANAGEMENT | ADVISORY



SOCIAL POLICY STUDIES SERVICES



ARCHITECTURE AND URBAN DESIGN

Architecture and Urban Planning are key areas on which commonspace has been established, while at the same time it is also the core areas of specialization of several of its members. The main axes that permeate the design methodology are the integrated approach through which all components are intended to be defined by uniform synthetic principles, multidisciplinary guaranteeing the combination of different scientific objects, participatory and focusing on the actual needs of users.

Members and co-workers of commonspace cover the full range of services related to the design of public and private projects. From the scale of object design and interior design, to the home, and from the scale of the neighborhood and public space to town planning and spatial planning. Apart from the range scale, our services include a range of tasks (pre-projects, feasibility studies, studies, licensing, costing, oversight, auctioning, contractors, etc.).



Services:

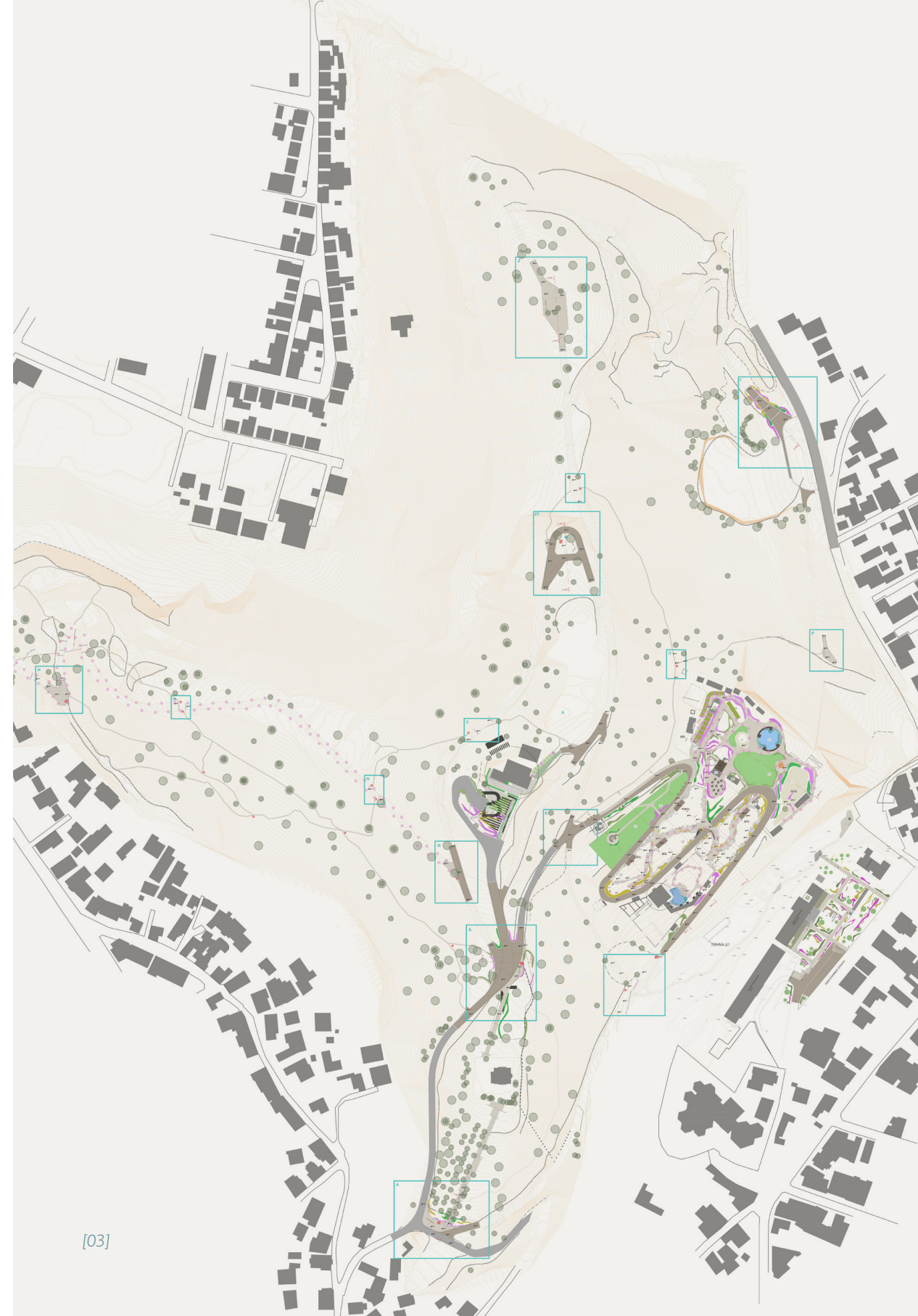
- Public space and sustainable mobility studies
- Building projects
- Landscape architecture studies



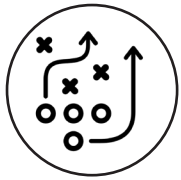
[01] Bungalows in Koufonissi, Cyclades
Year: 2012-2015

[02] Open Mall. Study for the Redesign of the Central Area of the Municipality of Messini, Year: 2020

[03] Protection and Upgrading of Profitis Ilias Hill, Municipality of Trikala.
Year: 2020



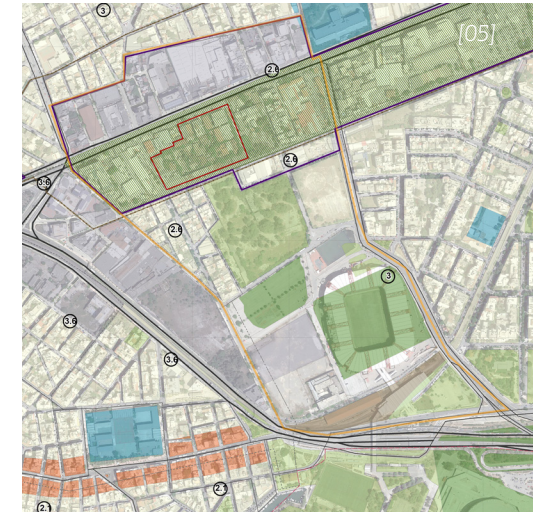
[03]



SPATIAL STRATEGIES

Spatial Planning and Design is at the heart of our work and the academic / research interests of our members. We have adopted and practice a design approach that deals with every scale of design and planning – from the details of urban equipment to town planning. In this sense, we perceive space as a multidimensional concept. It does not imply only architecture or urban space but a unity that changes because of physical, social, political or economic factors. Therefore, Spatial Strategies support this approach and includes several spatial examples and case studies.

The experience of commonspace has been developed by implementing new methodologies and approaches. Our focus is not only on the development and use of institutionalized urban / spatial planning tools but also on the inclusion of innovative financial and economic tools as well as the promotion of participatory design and planning.



Services:

- Urban Studies
- Local Urban Plans
- Spatial Plans
- Environmental Studies
- Development Strategies
- Sustainable Urban Development Plans
- Climate Change Adaptation Plans

[04] Guidelines for interventions in the public space of the Municipality of Athens (co. SAMARAS & ASSOCIATES S.A). Year: 2016-2017

[05] Special Spatial Plan for the «State of Innovation» in the «ΧΡΟΠΕΙ» (Piraeus Paint Factory) industrial complex (together with SALFO SA). Year: 2021

[06] Urban Plan for the Redevelopment of the Lipasmata Area, Municipality of Keratsini - Drapetsona. Year: 2023





PARTICIPATORY DESIGN

At the core of our approach and vision is the promotion of Participatory Planning/Design. This concept includes methodologies, tools and practices that involve social groups and communities in the strategic and management processes of public space design. It is not just a matter of consultation on laws or studies but of a substantive, equal and inclusive process of participation and co-decision.

Although in Greece there is a strong participation of the different social groups in the political sphere, the introduction of methods and tools for participatory planning/design is still under development. However, commonspace has played a pioneering role in entering such practices through its rich experience and research interests. We provide innovative and specialized participative design services across all spatial scales regarding different themes.

Services:

- Participatory Design of Public Space
- Participatory Design Platforms
- Participatory Design in schools
- Participatory Planning, Sustainable Development and Adaptation to Climate Change
- Production of Public Policies
- Conflicts Resolution

[07] ppCITY - Integrated Spatial Decision Making @ Participatory Planning. Year: 2018-2020

[08] Participatory LAB. Spatial, Urban and Environmental Participatory Planning Laboratory for Climate Change Adaptation. Year: 2020-2021

<https://www.participatorylab.org/>

[09] Participatory Workshop with citizens of the Municipality of Chalandri, for the design of Sofokli Venizelou street. Year: 2020

[10] Educational Program of Participatory Design in Agia Paraskevi Schools. Year: 2016



[09]



[10]



[07]

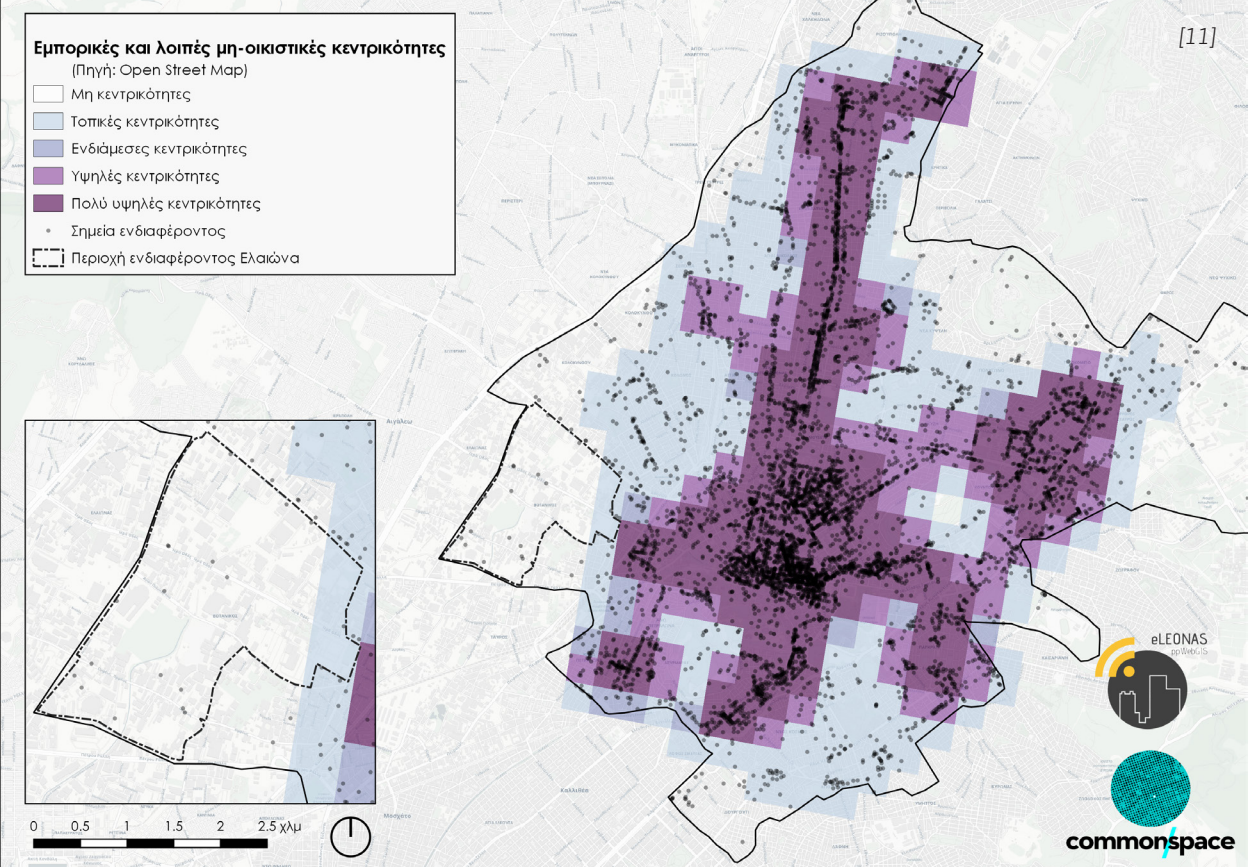
public participation
CITY



[08]



Με τη συγχρηματοδότηση της Ελλάδας και της Ευρωπαϊκής Ένωσης

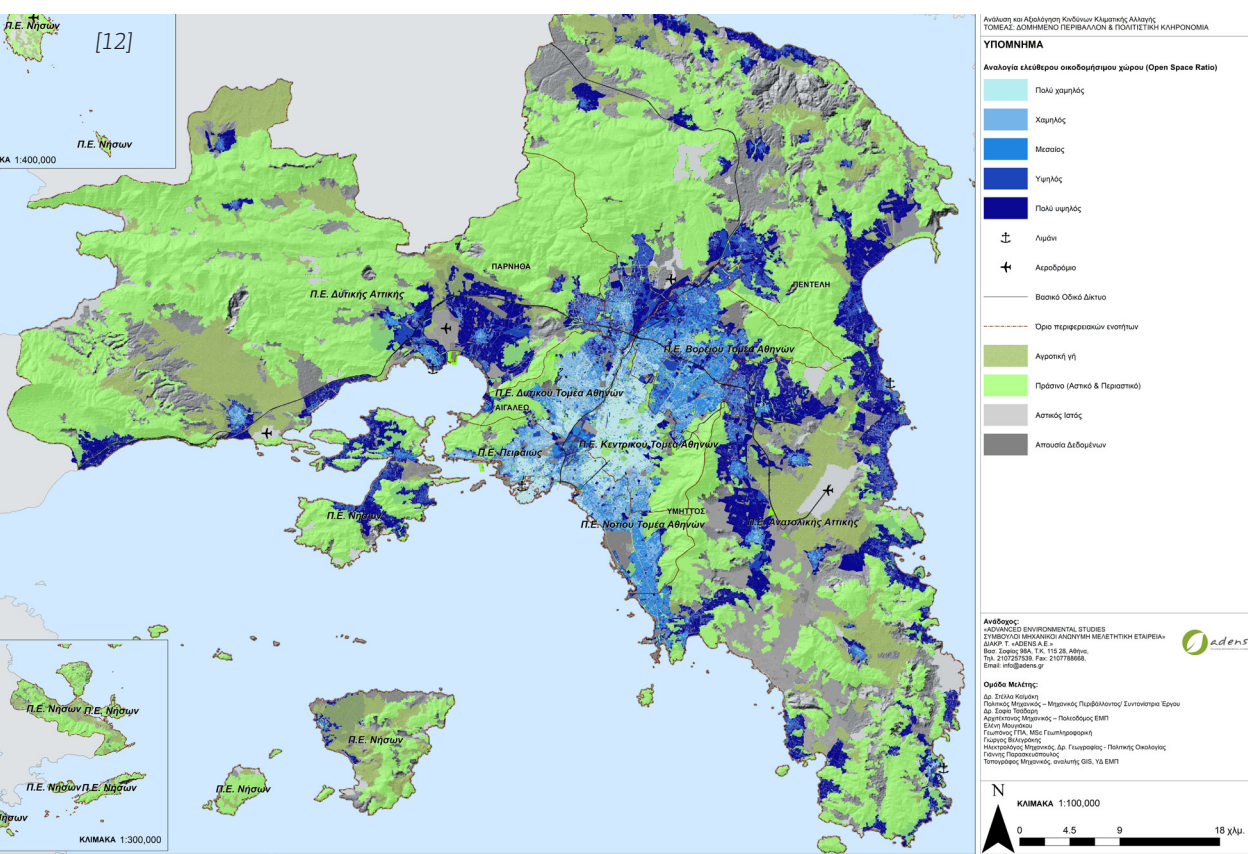


GIS - SPATIAL ANALYSIS

Spatial Analysis and GIS are key components of the services and knowledge we provide. The multidisciplinary approach to solving complex spatial and geographic problems is a key source of innovation and creates a high quality scientific result. Cartography, overlay, relativity of location, topology, semantics, space syntax and multicriteria analysis are central in our methodologies.

Our members, associates and commonspace as a whole, are actively involved in research fields regarding spatial issues and specialize in GIS. The main goal of our team is to implement groundbreaking methods in the study and analysis of space as well as the application of innovative methods for collecting, analyzing, and visualizing spatial data.

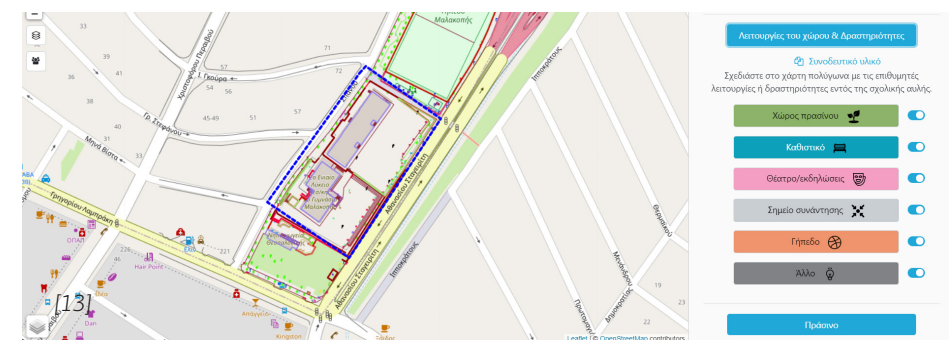
We insist on using open data, not only by public bodies but also by enterprises. This is the only way to promote research and innovation in the fields of spatial planning, environmental sciences and local/regional development. Commonsplace supports open source software, but also uses commercial software to meet the requirements of each project.



[11] Participatory Planning Platform for Sustainable Development - eLEONAS ppWebGIS. Year: 2020 - 2023

[12] Regional Climate Change Adaption Plan of the Region of Attica - Sector: Built environment @ Cultural Heritage. Year: 2019-2020

[13] Participatory online Platform. ppCITY, Year: 2018-2020





RESEARCH | EDUCATION

Commonspace deals a lot with the research on urban, environmental and sociospatial issues. Therefore, we constantly empower our involvement in the current scientific debates by participating in conferences, developing peer-reviewed publications and working on research projects in Greece and abroad. We understand knowledge as commonKnowledge and we try to cultivate the culture of collaboration and interdisciplinary approaches on every project we deal with. The spatial dimension in different sciences is the emphasis we want to give. History, Geography, Gender, Cinema and Space will be some of the interdisciplinary workshops we are preparing in collaboration with very interesting scientists and institutions.

Moreover, the understanding and visualization of historical / social / cultural information on a geographical basis is a valuable synthetic and interpretative tool that we try to promote in social science research. It allows the combination of cartographic evidence and historical information in a digital environment promoting both effective management and analysis. Yet, the evolution of GIS technology and its increasing use in the humanities field has made them an indispensable research tool.



[14]

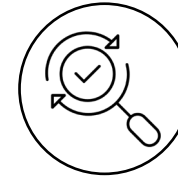
- Some projects:
- Fairville (RIA, Horizon Europe)
 - OLA (Erasmus+)
 - Green Artivism (Erasmus+)
 - ISL (Erasmus+)
 - EUTH-CLIMATE (Erasmus+)
 - Promencance (Erasmus+)
 - Schoolture (Erasmus+)



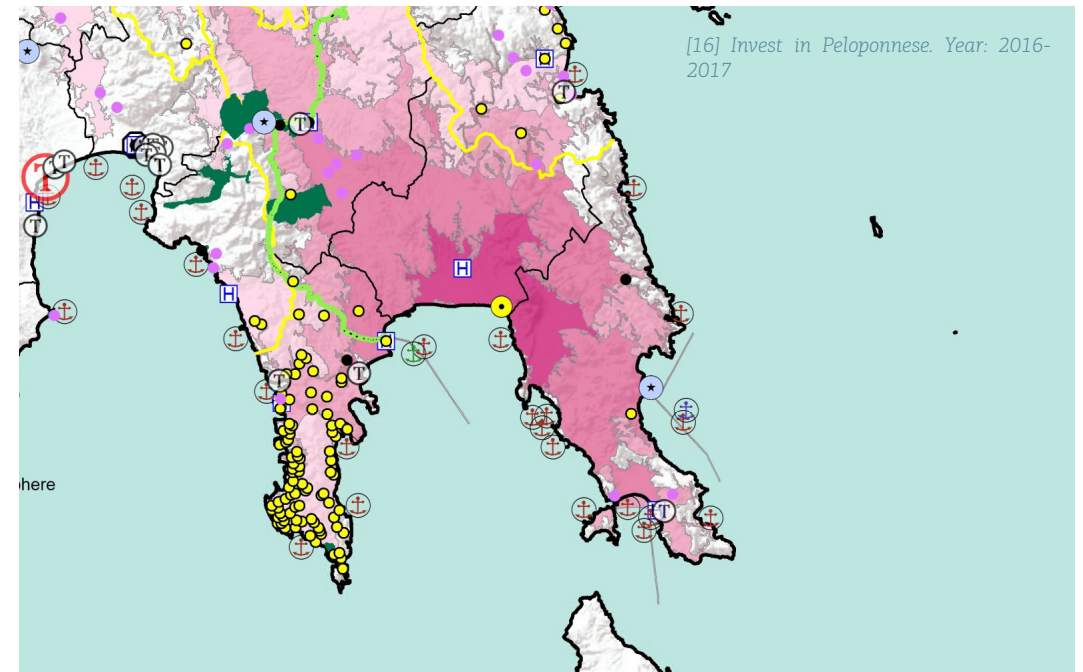
[15]

[14] Fairville, RIA, Horizon Europe. Year: 2023-2027

[15] Toxic Bios – A Guerilla Narrative Project. Year: 2017



PLANNING DUE DILIGENCE



[16] Invest in Peloponnese. Year: 2016-2017

Transactions in real estate and the implementation of development plans in Greece, require a thorough understanding of land uses, building potentials, licensing procedures and planning constrains emanating from the Greek and the European legal framework. Planning due diligence is an indispensable procedure for the successful identification of investment opportunities in the Greek real estate market, the acceleration of licensing procedures and risk assessment from an investor's point of view.

Commonspace has deep knowledge and an interdisciplinary approach to planning due diligence services, that includes a holistic examination of the Greek regional planning regulations, the urban planning legislation, the Greek building code, the archaeological constrains, the forest protection law, the coastal protection laws, the environmental protection framework, etc. Commonspace can also support the investigation and presentation of the advantages and disadvantages of the area of each site under consideration in correlation with the investment plan, the accessibility issue, landscape analysis and views from the site, resources and disturbances in the vicinity of the site, etc. using Geographical Information Systems (GIS). We also provide services of promotion of real estate properties, including the production of aerial photographs and videos of the property using drones.

Commonspace has already conducted relevant studies and projects for private persons, private companies, and public authorities for real estate properties in Peloponnese, Epirus, the island group of Cyclades, the Euboea island, and the region of Attica, Greece.



CULTURE | CULTURAL HERITAGE

COMMONSPACE has a particular interest in culture and cultural heritage as well as their relationship with public space, the city and citizen participation. The cultural heritage is an asset for public space. Therefore, we understand its protection and promotion as an integral part of public space management. In parallel, we introduce innovative tools and methods for cultural heritage management such as drama play, gamification, educational play, cultural walks, online GIS tools etc.

[17] 100 memories

RESEARCH-CREATE-INNOVATE" by P.A. "Competitiveness, Entrepreneurship and Innovation", NSRF2014-2020. 2014-2020

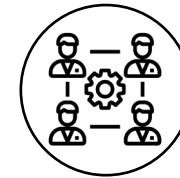


[18] IN ATHENS

RESEARCH-CREATE-INNOVATE" by P.A. "Competitiveness, Entrepreneurship and Innovation", NSRF2014-2020. 2014-2020



[19] Cultural H.ID.RA.N.T., UIA. Year: 2020-2023



SSE (SOCIAL SOLIDARITY ECONOMY)

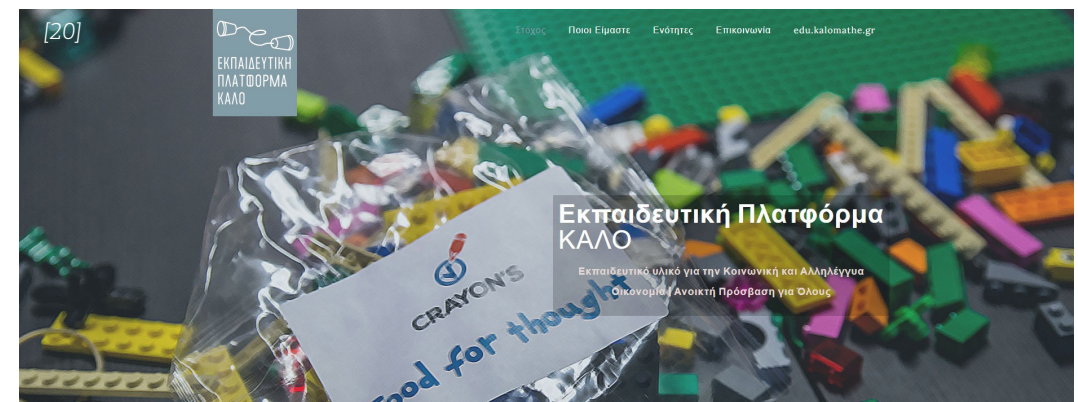
For the last five years, we have participated in every discussion and endeavor regarding the development and establishment of the SSE sector in Greece. We are aware of all recent research and policy-making at European and national level regarding social enterprises. We have contributed to the consultation on the 2016 law and we have participated in several stakeholder meetings regarding the SSE.

commonspsc COOP has a key role in coordinating the various SSE ventures in Greece (member of the Coordination of KOINSEP in Athens, founding member of the Union of SSE Entities of Attica, member of the Panhellenic Network of Social Solidarity Economy Cooperatives - SSE Coops GR). Our experience in collaborating and networking with other SSE entities at different levels (from the local to the international one) is important for the understanding of the multiple opportunities, needs and difficulties for the promotion of SSE.

Finally, commonspsc is a founding member of the Association «Educational Platform for K.A.L.O.» (kalomathe.gr).

[20] Educational platform

kalomathe.gr





PROJECT MANAGEMENT / ADVISORY

The members and associates of commonspace have rich experience in managing large-scale projects across a range of themes and case studies. Our participation in a number of European and National co-funded projects have enforced our expertise on different aspects and themes: project co-ordination, partnership building, proposals submission, communication management, scientific co-ordination, etc.).

Our main idea is that by developing new activities within such projects, we build synergies between different institutions of the private and the public sector and we develop innovative practices at different scales.

Services:

- Management of European and co-financed projects
- Communication Management
- Event Management
- Local Government Development Consultancy services

[21] Shedia Art: Social and Environmental project of upcycling and re-use/ up cycling, DIOGENIS NGO Year: 2018-2020



SOCIAL POLICY STUDIES SERVICES

The assessment and evaluation of an area of intervention's social, demographic, economic, and cultural features are crucial for successfully implementing a project. In particular, in a period in which diverse crisis events (such as climate change, a health crisis or other natural disasters) affect and reshape the identity of an area, the study of the social impact of a project is crucial to the development of an integrated approach to address problems and to articulate innovative development proposals. Commonspace Co-op and its associates, with their scientific expertise and professional experience, offer integrated social studies to public and private sector organisations. In this context, they provide consultation services to develop and improve public sector services in Municipalities, Regional Authorities or the Central Government.

Social Impact Assessment Studies aim to access, evaluate and manage the social impact of industrial and development projects. According to the International Association for Impact Assessment, a Social Impact Assessment is a process of research, planning, and managing social change or consequences (positive and negative, intended and unintended) arising from policies, plans, developments, and projects (UNEP, 2007). In this context, Social Impact Assessment Studies are a valuable tool for developing and implementing Social policy projects and programs. In Commonspace Co.op, we implement Social Impact Assessment Studies following the International Association for Impact Assessment protocols.

[22] Participatory budgeting (PB)

(co: Heinrich Böll Stiftung Greece and Dock). Year: 2021

[22]



Participatory Municipal Budgeting

Our partners



Municipalities / Regions

REGION OF ATTICA
REGION OF PELOPONNESE
MUNICIPALITY OF ATHENS
MUNICIPALITY OF PIREUS
MUNICIPALITY OF CHALANDRI
MUNICIPALITY OF AGIA PARASKEVI
MUNICIPALITY OF THESSALONIKI
MUNICIPALITY OF TRIKALA
MUNICIPALITY OF CHANIA
MUNICIPALITY OF MESSINI



Public Bodies, Government Entities, Local and Regional Authorities

MOU SA
PPC SA
ADDMA SA
e - Trikala
Development Agency of Karditsa SA
CMFO SA
EYDAP



Companies

SALFO & Associates SA
A.T. Management
Theorema SA
AMBIO SA
TPA - Thymio Papayannis & Associates Inc.
GET SA
SAMARAS & ASSOCIATES S.A. – CONSULTING ENGINEERS
Optimum Value
TÜV AUSTRIA HELLAS
NORTH SOUTH CONSULTANTS EXCHANGE (NSCE)



Universities

NTUA
UOA
University of Patras
University of West Attica
Agricultural University of Athens
Institute of Historical Research
BERNER FACHHOCHSCHULE
KTH Royal Institute of Technology School
UCL / THE BARTLETT
CNRS (French National Centre for Scientific Research)
University of Torino
University Politehnica of Bucharest
University of Cyprus
Complutense University of Madrid (UCM)
AESOP (Association of European Schools of Planning)
Paris 8 University



Foundations-Institutions

Heinrich Böll Foundation
Goethe-Institute Athens
Greek National Opera (GNO)
John S. Latsis Public Benefit Foundation
Stavros Niarchos Foundation
Bodossaki Foundation (Active Citizens Fund)



NGOs and Cooperatives

DIOGENIS NGO
WWF Greece
Dipylon Society NPO
DOCK AMKE
SOCIALITY
LUDD
HERMES NGO
Vouliwatch
Ohi Pezoume Performing Arts Non-Profit Company
S-NODI
APPUII

commonsspace

ASKLIPIOU 91, ATHENS, 11472

+30 2130434085

info@commons.space.gr

<https://www.commonspace.gr>



Commonspace Co-op



commons.space.coop



@CommonspaceC



Commonspace Coop