

Designing our common space



December 2025

Our story and vision

commonsplace because we design and study the shared/common public space as a node between society, infrastructure and the environment. For us, the planning and management of public space is a “common” research field in which “we are active”.

commonsplace because at the heart of our vision lay community and space as complex and multifaceted concepts. We perceive space not only as the recipient of human activities but as a unity that is being transformed by environmental, social, political and economic factors. The challenges of today’s era have above all a spatial dimension.

Commonspace is a collaborative – interdisciplinary planning and design group that works since 2012. In 2015 was established as a Social Cooperative Enterprise under the name “CPD Creating Spaces” and in 2017 as a Worker Cooperative under its current name. So far, the network has collaborated with Universities, Educational Institutions, Public Benefit Institutions, Municipalities, Regional Governments, NGOs and various Enterprises. We have designed and fulfilled projects, studies and programs funded by various public and private institutions. Furthermore, we have developed scientific work and voluntary action on issues related to urban conflicts and social movements, (critical) sustainable development and environmental protection.

Commonspace provides high-quality services in the field of spatial strategies, integrated urban and spatial planning and sustainable mobility, architecture, urban and environmental design, social research, and participatory design. It combines expertise in spatial analysis methodologies and tools with design innovation and participatory social research. It seeks to be a link between citizens, social institutions and public authorities, a hub for the exchange of knowledge, ideas, and applied practices.



Our team



Eleni Mougiakoy
Agricultural Engineer, GIS expert,
PhD Agricultural University



Kostas Vourekas
Architect, Urban
and Regional Planner



Sofia Tsadari
Architect, Urban and Regional
Planner, PhD NTUA



Thanos Andritsos
Architect, Urban and Regional
Planner, PhD NTUA



Dimitris Poullos
Architect, Urban Planner,
PhD NTUA



Giouli Athousaki
Business Administration,
Cultural Project Management



Giorgos Velegrakis
MEng Electrical and Computer Eng.
PhD in Geography - Political Ecology



Anastasia Christaki
Architect, MSc Urban and
Regional Planning, PhD NTUA



Giannis Paraskevopoulos
Geoinformatics Eng., MSc Urban and
Regional Planning, PhD NTUA



Dionisia Koutsi
Urban and Regional
Planner, PhD NTUA



Artemis Koumparelou
Architect, MSc Geography



Aiki Kosifologou
PhD Political Science and
Sociology



Katerina Ventouri
Business Administration



Sylvain Adam
Architect, Illustrator &
designer



Sofia Stavrou
Architect, MSc Philosophy



Theodora Moschou
Architect, MSc Management of
historical groups



Melina Vlachou
Architect,
Illustrator & designer



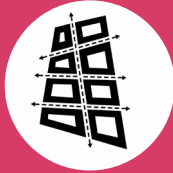
Maria Tsumari
Architect



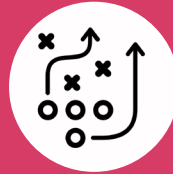
The wide range of commonspace's members and associates create a network of experts and scientists involved in urban development, spatial and environmental planning, combining research work and study projects.

Interdisciplinarity, integrated approach and social interest are at the center of our vision and define our operation and work. The social, spatial, and environmental problems of current times are complex. Therefore, solving them requires the composition of scientific knowledge from several fields. This perspective is reflected in our team, as well as in the wide range of collaborators / ideas with which we approach the special requirements of each project.

Our Services



ARCHITECTURE
URBAN DESIGN



SPATIAL STRATEGIES



PARTICIPATORY DESIGN



GIS | SPATIAL ANALYSIS



RESEARCH | EDUCATION



PLANNING DUE DILIGENCE



CULTURE | CULTURAL HERITAGE



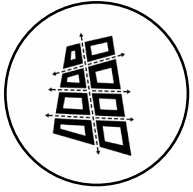
SSE (SOCIAL SOLIDARITY ECONOMY)



PROJECT MANAGEMENT | ADVISORY



SOCIAL POLICY STUDIES SERVICES



ARCHITECTURE AND URBAN DESIGN

Architecture and Urban Planning are key areas on which commonsense has been established, while at the same time it is also the core areas of specialization of several of its members. The main axes that permeate the design methodology are the integrated approach through which all components are intended to be defined by uniform synthetic principles, multidisciplinary guaranteeing the combination of different scientific objects, participatory and focusing on the actual needs of users.

The members and associates of commonsense cover the entire spectrum of services related to the design of public and private projects. From interior design to housing, and from the scale of the neighborhood and public space to urban planning and spatial planning. In addition to the range in terms of spatial scale, our services include a corresponding range of tasks (preliminary studies, final studies and implementation studies, permits, cost estimates, supervision, tender documents, contracting, etc.). Having participated with distinction in architectural and urban planning competitions and collaborated with public and private sector on projects with significant impact, we seek to combine high design quality with modern approaches and tools that are friendly to the environment and nature, but also socially just design.



Indicative Services:

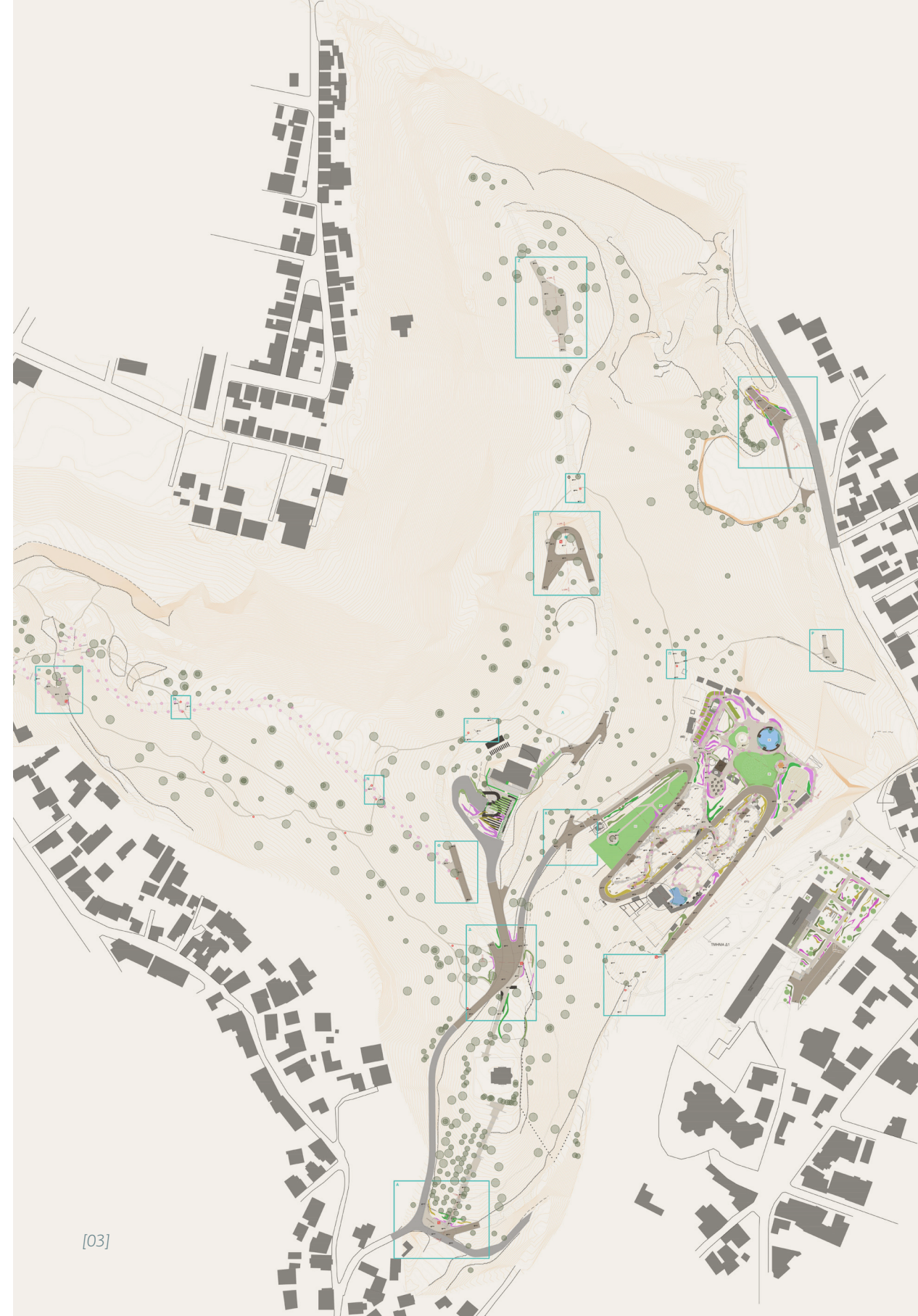
- Studies of public spaces and urban regeneration
- Building project studies
- Park and green space studies
- Landscape architecture studies
- Building restoration and cultural heritage management
- Public space design and protection studies, pedestrianization, and traffic management



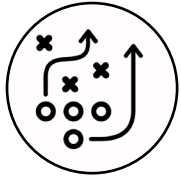
[01] Bungalows in Koufonissi, Cyclades
Year: 2012-2015

[02] Open Mall. Study for the Redesign of
the Central Area of the Municipality of
Messini, Year: 2021

[03] Protection and Upgrading of Profitis
Ilias Hill, Municipality of Trikala.
Year: 2020



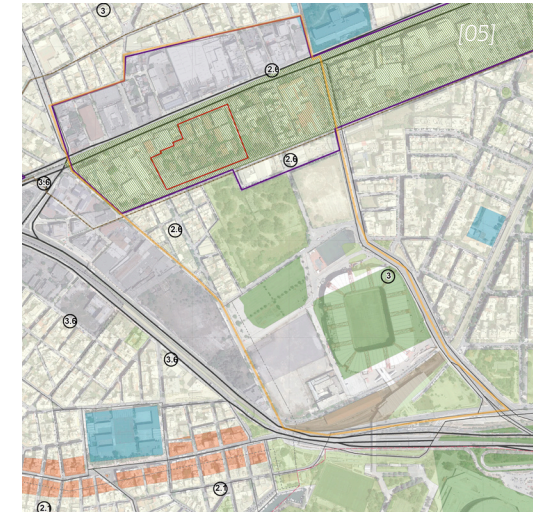
[03]



SPATIAL STRATEGIES

Spatial Planning and Design is at the heart of our work and the academic / research interests of our members. We have adopted and practice a design approach that deals with every scale of design and planning – from the details of urban equipment to town planning. In this sense, we perceive space as a multidimensional concept. It does not imply only architecture or urban space but a unity that changes because of physical, social, political or economic factors. Therefore, Spatial Strategies support this approach and includes several spatial examples and case studies.

The experience of commonspace has been developed by implementing new methodologies and approaches. Our focus is not only on the development and use of institutionalized urban / spatial planning tools but also on the inclusion of innovative financial and economic tools as well as the promotion of participatory design and planning.



Services:

- Urban Studies
- Local Urban Plans
- Spatial Plans
- Environmental Studies
- Development Strategies
- Sustainable Urban Development Plans
- Climate Change Adaptation Plans

[04] Guidelines for interventions in the public space of the Municipality of Athens (co. SAMARAS & ASSOCIATES S.A). Year: 2016-2017

[05] Special Spatial Plan for the «State of Innovation» in the «ΧΡΟΠΕΙ» (Piraeus Paint Factory) industrial complex (together with SALFO SA). Year: 2021

[06] Urban Plan for the Redevelopment of the Lipasmata Area, Municipality of Keratsini - Drapetsona. Year: 2023





PARTICIPATORY DESIGN

At the core of our approach and vision is the promotion of Participatory Planning/Design. This concept includes methodologies, tools and practices that involve social groups and communities in the strategic and management processes of public space design. It is not just a matter of consultation on laws or studies but of a substantive, equal and inclusive process of participation and co-decision.

Although in Greece there is a strong participation of the different social groups in the political sphere, the introduction of methods and tools for participatory planning/design is still under development. However, commonspace has played a pioneering role in entering such practices through its rich experience and research interests. We provide innovative and specialized participative design services across all spatial scales regarding different themes.

Services:

- Participatory Design of Public Space
- Participatory Design Platforms
- Participatory Design in schools
- Participatory Planning, Sustainable Development and Adaptation to Climate Change
- Production of Public Policies
- Conflicts Resolution

[07] ppCITY - Integrated Spatial Decision Making @ Participatory Planning. Year: 2018-2020

[08] Participatory LAB. Spatial, Urban and Environmental Participatory Planning Laboratory for Climate Change Adaptation. Year: 2020-2021

<https://www.participatorylab.org/>

[09] Participatory Workshop with citizens of the Municipality of Chalandri, for the design of Sofokli Venizelou street. Year: 2020

[10] Educational Program of Participatory Design in Agia Paraskevi Schools. Year: 2016



[09]



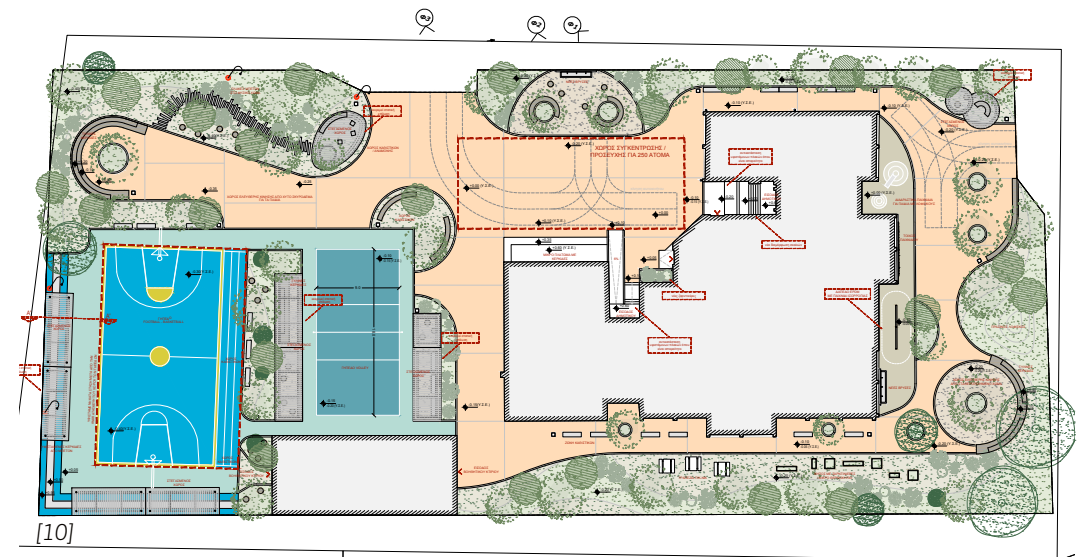
public participation
CITY



[07]



[08]



[10]



RESEARCH- INNOVATION

Commonspace as a group, as well as its individual members, are engaged in researching space, its phenomena, and the social relationships that develop within it. We seek to continuously monitor the current scientific debate and research across a wide range of fields of knowledge through conference presentations, publications in scientific journals, participation in research projects, and ongoing communication with the academic community. Common knowledge and culture of cooperation and interdisciplinarity are key principles that inspire us. Over the years, we have participated in dozens of projects in Greece and at the European level, achieving significant success in highly demanding research and innovation programs (such as Horizon, Interreg, UIA-EUI, DUT, Erasmus+, etc.).

[13] **MAINCODE** | MAINstreaming nature to CO-DEsign urban climate shelters in schoolyards

Project | Partnership of Technological University of Crete, University of Ioannina, City of Iraklio, City of Rethymno

EU | 2022 Horizon Pathway | Circular Urban Economy

Report Number: 04/2023 - 30/04/2027

Challenges addressed

Global temperature records are being shattered year after year. Heatwaves are getting longer, more intense and life-threatening climate impacts, such as 2°C global warming scenarios, substantially 100 million Europeans could face unprecedented summer temperatures by 2050. Climate shelters are promising solutions aimed at transforming key urban spaces to offer protection during extreme heat events. Focus is on innovative approaches to urban transformation. Along the way, MAINCODE promotes climate shelters to local authorities and housing cities.

Solutions proposed

MAINCODE promotes Urban Climate Shelters as a long-term strategy for climate mitigation and adaptation in urban settings that offer social cohesion, well-being, and resilience. Interventions by integrating NBS and on-design processes to a network of safe, inclusive, and accessible public spaces. MAINCODE tests in two pilot schoolyards in Italy and Greece. Training, urban design, and participatory research. Building participatory projects for improving local needs and regenerative urbanism, while engaging children, local communities, policy makers, and practitioners.

Expected results

MAINCODE's goal is to strengthen, scale up, and replicate Urban Climate Shelters as a solution for addressing and reducing heat. From MAINCODE emerges the **WaterEFA Framework** for testing, design, analysis, monitoring. MAINCODE provides a comprehensive methodology for the implementation, testing, and evaluation of climate shelters. MAINCODE creates a practical manual for architects and practitioners, along with a set of policy recommendations for decision-makers, concerning the broader replication of climate shelters in European cities.

Partners: SDU, UoI, UoC, UoA, UoB, UoP, UoR, UoT, UoM, UoN, UoV, UoW, UoY, UoZ, UoAA, UoAB, UoAC, UoAD, UoAE, UoAF, UoAG, UoAH, UoAI, UoAJ, UoAK, UoAL, UoAM, UoAN, UoAO, UoAP, UoAQ, UoAR, UoAS, UoAT, UoAU, UoAV, UoAW, UoAX, UoAY, UoAZ, UoBA, UoBB, UoBC, UoBD, UoBE, UoBF, UoBG, UoBH, UoBI, UoBJ, UoBK, UoBL, UoBM, UoBN, UoBO, UoBP, UoBQ, UoBR, UoBS, UoBT, UoBU, UoBV, UoBW, UoBX, UoBY, UoBZ, UoCA, UoCB, UoCC, UoCD, UoCE, UoCF, UoCG, UoCH, UoCI, UoCJ, UoCK, UoCL, UoCM, UoCN, UoCO, UoCP, UoCQ, UoCR, UoCS, UoCT, UoCU, UoCV, UoCW, UoCX, UoCY, UoCZ, UoDA, UoDB, UoDC, UoDD, UoDE, UoDF, UoDG, UoDH, UoDI, UoDJ, UoDK, UoDL, UoDM, UoDN, UoDO, UoDP, UoDQ, UoDR, UoDS, UoDT, UoDU, UoDV, UoDW, UoDX, UoDY, UoDZ, UoEA, UoEB, UoEC, UoED, UoEF, UoEG, UoEH, UoEI, UoEJ, UoEK, UoEL, UoEM, UoEN, UoEO, UoEP, UoEQ, UoER, UoES, UoET, UoEU, UoEV, UoEW, UoEX, UoEY, UoEZ, UoFA, UoFB, UoFC, UoFD, UoFE, UoFF, UoFG, UoFH, UoFI, UoFJ, UoFK, UoFL, UoFM, UoFN, UoFO, UoFP, UoFQ, UoFR, UoFS, UoFT, UoFU, UoFV, UoFW, UoFX, UoFY, UoFZ, UoGA, UoGB, UoGC, UoGD, UoGE, UoGF, UoGG, UoGH, UoGI, UoGJ, UoGK, UoGL, UoGM, UoGN, UoGO, UoGP, UoGQ, UoGR, UoGS, UoGT, UoGU, UoGV, UoGW, UoGX, UoGY, UoGZ, UoHA, UoHB, UoHC, UoHD, UoHE, UoHF, UoHG, UoHH, UoHI, UoHJ, UoHK, UoHL, UoHM, UoHN, UoHO, UoHP, UoHQ, UoHR, UoHS, UoHT, UoHU, UoHV, UoHW, UoHX, UoHY, UoHZ, UoIA, UoIB, UoIC, UoID, UoIE, UoIF, UoIG, UoIH, UoII, UoIJ, UoIK, UoIL, UoIM, UoIN, UoIO, UoIP, UoIQ, UoIR, UoIS, UoIT, UoIU, UoIV, UoIW, UoIX, UoIY, UoIZ, UoJA, UoJB, UoJC, UoJD, UoJE, UoJF, UoJG, UoJH, UoJI, UoJJ, UoJK, UoJL, UoJM, UoJN, UoJO, UoJP, UoJQ, UoJR, UoJS, UoJT, UoJU, UoJV, UoJW, UoJX, UoJY, UoJZ, UoKA, UoKB, UoKC, UoKD, UoKE, UoKF, UoKG, UoKH, UoKI, UoKJ, UoKL, UoKM, UoKN, UoKO, UoKP, UoKQ, UoKR, UoKS, UoKT, UoKU, UoKV, UoKW, UoKX, UoKY, UoKZ, UoLA, UoLB, UoLC, UoLD, UoLE, UoLF, UoLG, UoLH, UoLI, UoLJ, UoLK, UoLL, UoLM, UoLN, UoLO, UoLP, UoLQ, UoLR, UoLS, UoLT, UoLU, UoLV, UoLW, UoLX, UoLY, UoLZ, UoMA, UoMB, UoMC, UoMD, UoME, UoMF, UoMG, UoMH, UoMI, UoMJ, UoMK, UoML, UoMN, UoMO, UoMP, UoMQ, UoMR, UoMS, UoMT, UoMU, UoMV, UoMW, UoMX, UoMY, UoMZ, UoNA, UoNB, UoNC, UoND, UoNE, UoNF, UoNG, UoNH, UoNI, UoNJ, UoNK, UoNL, UoNM, UoNN, UoNO, UoNP, UoNQ, UoNR, UoNS, UoNT, UoNU, UoNV, UoNW, UoNX, UoNY, UoNZ, UoOA, UoOB, UoOC, UoOD, UoOE, UoOF, UoOG, UoOH, UoOI, UoOJ, UoOK, UoOL, UoOM, UoON, UoOO, UoOP, UoOQ, UoOR, UoOS, UoOT, UoOU, UoOV, UoOW, UoOX, UoOY, UoOZ, UoPA, UoPB, UoPC, UoPD, UoPE, UoPF, UoPG, UoPH, UoPI, UoPJ, UoPK, UoPL, UoPM, UoPN, UoPO, UoPP, UoPQ, UoPR, UoPS, UoPT, UoPU, UoPV, UoPW, UoPX, UoPY, UoPZ, UoQA, UoQB, UoQC, UoQD, UoQE, UoQF, UoQG, UoQH, UoQI, UoQJ, UoQK, UoQL, UoQM, UoQN, UoQO, UoQP, UoQQ, UoQR, UoQS, UoQT, UoQU, UoQV, UoQW, UoQX, UoQY, UoQZ, UoRA, UoRB, UoRC, UoRD, UoRE, UoRF, UoRG, UoRH, UoRI, UoRJ, UoRK, UoRL, UoRM, UoRN, UoRO, UoRP, UoRQ, UoRR, UoRS, UoRT, UoRU, UoRV, UoRW, UoRX, UoRY, UoRZ, UoSA, UoSB, UoSC, UoSD, UoSE, UoSF, UoSG, UoSH, UoSI, UoSJ, UoSK, UoSL, UoSM, UoSN, UoSO, UoSP, UoSQ, UoSR, UoSS, UoST, UoSU, UoSV, UoSW, UoSX, UoSY, UoSZ, UoTA, UoTB, UoTC, UoTD, UoTE, UoTF, UoTG, UoTH, UoTI, UoTJ, UoTK, UoTL, UoTM, UoTN, UoTO, UoTP, UoTQ, UoTR, UoTS, UoTT, UoTU, UoTV, UoTW, UoTX, UoTY, UoTZ, UoUA, UoUB, UoUC, UoUD, UoUE, UoUF, UoUG, UoUH, UoUI, UoUJ, UoUK, UoUL, UoUM, UoUN, UoUO, UoUP, UoUQ, UoUR, UoUS, UoUT, UoUU, UoUV, UoUW, UoUX, UoUY, UoUZ, UoVA, UoVB, UoVC, UoVD, UoVE, UoVF, UoVG, UoVH, UoVI, UoVJ, UoVK, UoVL, UoVM, UoVN, UoVO, UoVP, UoVQ, UoVR, UoVS, UoVT, UoVU, UoVV, UoVW, UoVX, UoVY, UoVZ, UoWA, UoWB, UoWC, UoWD, UoWE, UoWF, UoWG, UoWH, UoWI, UoWJ, UoWK, UoWL, UoWM, UoWN, UoWO, UoWP, UoWQ, UoWR, UoWS, UoWT, UoWU, UoWV, UoWW, UoWX, UoWY, UoWZ, UoXA, UoXB, UoXC, UoXD, UoXE, UoXF, UoXG, UoXH, UoXI, UoXJ, UoXK, UoXL, UoXM, UoXN, UoXO, UoXP, UoXQ, UoXR, UoXS, UoXT, UoXU, UoXV, UoXW, UoXX, UoXY, UoXZ, UoYA, UoYB, UoYC, UoYD, UoYE, UoYF, UoYG, UoYH, UoYI, UoYJ, UoYK, UoYL, UoYM, UoYN, UoYO, UoYP, UoYQ, UoYR, UoYS, UoYT, UoYU, UoYV, UoYW, UoYX, UoYY, UoYZ, UoZA, UoZB, UoZC, UoZD, UoZE, UoZF, UoZG, UoZH, UoZI, UoZJ, UoZK, UoZL, UoZM, UoZN, UoZO, UoZP, UoZQ, UoZR, UoZS, UoZT, UoZU, UoZV, UoZW, UoZX, UoZY, UoZZ.

[14] **FAIRVILLE**

Facing Inequalities and democratic challenges through Co-production in Cities (Fairville) is an Urban Co-Production Research Project Horizon Europe.

Fairville uses knowledge co-production as strategies to address urban inequalities and democratic issues affecting seven urban areas in Europe, and two other mirror cases in Africa.

Fairville experiments co-production with civil society actors, universities and local authorities to facilitate multi-engagement towards embracing entrenched urban and environmental inequalities with affected residents or community groups. Through coproduction of knowledge and actions-oriented programmes, it contributes to rethinking urban democracy.

Do you want to help? There are many ways to contribute to the project: would you like to participate in the co-production in our project tasks or go on the field in our Fairville Lab? Contact us!

www.fairville.eu.org
fairville.eu@gmail.com

[15] **RealUrbanGreen** | Promoting Green Living Areas

Partners: RealUrbanGreen, Interreg Euro-MED, City of Iraklio, City of Rethymno

EU | 2022 Horizon Pathway | Circular Urban Economy

Report Number: 04/2023 - 30/04/2027

Our Project

Metropolitan cities are increasingly exposed to environmental pressures such as biodiversity loss and degradation, and urban heat. The RealUrbanGreen project addresses these challenges by **promoting a holistic and participatory model for the regeneration of Urban Green Spaces (UGS)**. In a bottom-up approach, the project involves citizens, local authorities, and stakeholders in the design and co-managing urban green spaces to improve the health and climate resilience of parks and gardens. By enhancing the responsibility of UGS, and integrating urban planning, urban climate adaptation, and social inclusion, RealUrbanGreen transforms green spaces into key assets for sustainability, livability, and resilience in cities.

Key Figures

Total Budget: 2,947,915 €
Project Duration: 33 months
Working People: 1,996,332

Project Partners

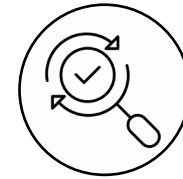
The Real Urban Green Living Areas (RUGLA) is a joint effort of the City of Iraklio, the City of Rethymno, the University of Ioannina, and the University of Crete. The project is funded by the European Union under the Horizon Europe programme.

Visit our website: <https://realurbangreen.interreg-euro-med.eu>

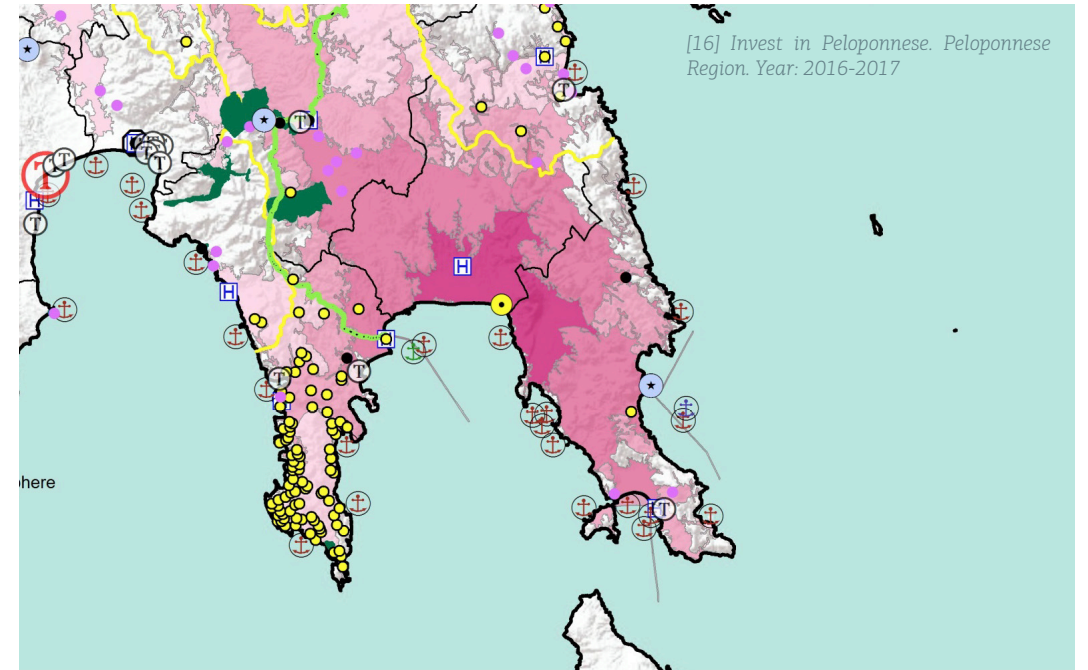
[13] MAINCODE- MAINstreaming nature to CO-DEsign urban climate shelters in schoolyards, DUT Partnership. Year: 2025 - 2027

[14] Fairville, Facing Inequalities and democratic challenges through Co production in Cities, Horizon Europe. Year: 2023 - 2026

[15] RealUrbanGreen, Promoting Green Living Areas, Interreg Euro-MED Programme, Year: 2025 - 2038



PLANNING DUE DILIGENCE



Commonspace has in-depth knowledge, considerable experience, and an interdisciplinary approach to providing services for investigating urban planning possibilities and real estate commitments (planning due diligence), which includes a holistic examination of the spatial planning framework, urban planning and building legislation, protection regimes, environmental legislation, etc.

It also provides support services for the systematic investigation and presentation of the advantages and disadvantages of the property area depending on the investment sector, issues of accessibility and reachability of the property, view, landscape, proximity to important resources and nuisance uses using Geographic Information Systems (GIS), as well as property promotion services with aerial photography and video production using drones. By using a specialized network of partner companies, commonspace also provides services to figure out the best and most efficient investment scenario (highest and best use analysis) and estimate the value of the property.

Commonspace has carried out relevant studies and projects for individuals, private companies, and broader public sector entities for properties in the Peloponnese, Epirus, the Cyclades, Euboea, and Attica.



CULTURE - CULTURAL HERITAGE

Culture and cultural heritage, and in particular their relationship with public space, the city, and citizen participation, are central areas of interest for commonspace. Cultural heritage is both a visible and invisible part of public space. It reflects the stories of the place and its people. Its protection and promotion are an integral part of our perception of the unity of public space and its connection with people. Furthermore, participatory processes and the mobilization of society as a whole can rapidly change the conditions for the protection and promotion of cultural heritage. Finally, commonspace has introduced alternative experiential activities such as theatrical play, sensory play, cultural activities, etc. into the implementation of projects and workshops related to Participatory Design and Cultural Heritage.

Finally, commonspace has introduced alternative experiential activities such as theatrical play, sensory play, cultural activities, etc. into the implementation of projects and workshops related to Participatory Design and Cultural Heritage.

[17] 100 memories

RESEARCH-CREATE-INNOVATE" by P.A.
"Competitiveness, Entrepreneurship and Innovation",
NSRF 2014-2020.

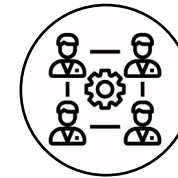


[18] IN ATHENS

RESEARCH-CREATE-INNOVATE" by P.A.
"Competitiveness, Entrepreneurship and Innovation",
NSRF 2014-2020.



[19] Cultural H.ID.RA.N.T., UIA. Year: 2020-2023



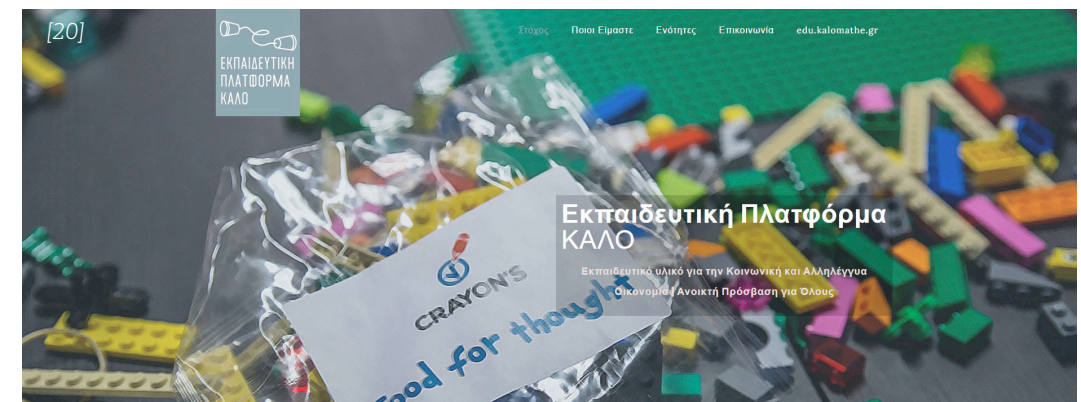
SSE (SOCIAL SOLIDARITY ECONOMY)

For the last five years, we have participated in every discussion and endeavor regarding the development and establishment of the SSE sector in Greece. We are aware of all recent research and policy-making at European and national level regarding social enterprises. We have contributed to the consultation on the 2016 law and we have participated in several stakeholder meetings regarding the SSE.

commonspace COOP has a key role in coordinating the various SSE ventures in Greece (member of the Coordination of KOINSEP in Athens, founding member of the Union of SSE Entities of Attica, member of the Panhellenic Network of Social Solidarity Economy Cooperatives - SSE Coops GR). Our experience in collaborating and networking with other SSE entities at different levels (from the local to the international one) is important for the understanding of the multiple opportunities, needs and difficulties for the promotion of SSE. Finally, commonspace is a founding member of the Association «Educational Platform for K.A.L.O.» (kalomathe.gr)

[20] Educational platform

kalomathe.gr





PROJECT MANAGEMENT - ADVISORY

The members and associates of commonspace have rich experience in managing large-scale projects across a range of themes and case studies. Our participation in a number of European and National co-funded projects have enforced our expertise on different aspects and themes: project co-ordination, partnership building, proposals submission, communication management, scientific co-ordination, etc.).

Our main idea is that by developing new activities within such projects, we build synergies between different institutions of the private and the public sector and we develop innovative practices at different scales.

Services:

- Management of European and co-financed projects
- Communication Management
- Event Management
- Local Government Development Consultancy services

[21] Shedia Art: Social and Environmental project of upcycling and re-use/ up cycling, DIOGENIS NGO Year: 2018-2020



[21]



SOCIAL POLICY STUDIES SERVICES

The assessment and evaluation of an area of intervention's social, demographic, economic, and cultural features are crucial for successfully implementing a project. In particular, in a period in which diverse crisis events (such as climate change, a health crisis or other natural disasters) affect and reshape the identity of an area, the study of the social impact of a project is crucial to the development of an integrated approach to address problems and to articulate innovative development proposals. Commonsplace. Co-op and its associates, with their scientific expertise and professional experience, offer integrated social studies to public and private sector organisations. In this context, they provide consultation services to develop and improve public sector services in Municipalities, Regional Authorities or the Central Government.

Social Impact Assessment Studies aim to access, evaluate and manage the social impact of industrial and development projects. According to the International Association for Impact Assessment, a Social Impact Assessment is a process of research, planning, and managing social change or consequences (positive and negative, intended and unintended) arising from policies, plans, developments, and projects (UNEP, 2007). In this context, Social Impact Assessment Studies are a valuable tool for developing and implementing Social policy projects and programs. In Commonsplace Co.op, we implement Social Impact Assessment Studies following the International Association for Impact Assessment protocols.

[22] Power to Equality - ADMIE. Year: 2025



Our partners



Municipalities / Regions

REGION OF ATTICA
REGION OF PELOPONNESE
MUNICIPALITY OF ATHENS
MUNICIPALITY OF PIREUS
MUNICIPALITY OF CHALANDRI
MUNICIPALITY OF AGIA PARASKEVI
MUNICIPALITY OF THESSALONIKI
MUNICIPALITY OF TRIKALA
MUNICIPALITY OF IOANNINA
MUNICIPALITY OF CHANIA
MUNICIPALITY OF MESSINI



Public Bodies, Government Entities, Local and Regional Authorities

MOU SA
PPC SA
ADDMA SA
e - Trikala
Development Agency of Karditsa SA
CMFO SA
EYDAP
Climattica
ICLEI Europe



Companies

SALFO & Associates SA
A.T. Management
Theorema SA
AMBIO SA
TPA - Thymio Papayannis & Associates Inc.
TECHNIKI EKPAIDEUTIKI SA
GET SA
SAMARAS & ASSOCIATES S.A. – CONSULTING ENGINEERS
Optimum Value
TÜV AUSTRIA HELLAS
NORTH SOUTH CONSULTANTS EXCHANGE (NSCE)



Universities / Institutions

NTUA / UOA / Agricultural University of Athens / University of West Attica
University of Patras
University of Crete
University of Thessaly
Institute of Historical Research
Regional Development Institute of Panteion University
BERNER FACHHOCHSCHULE
KTH Royal Institute of Technology School
UCL / THE BARTLETT
CNRS (French National Centre for Scientific Research)
University of Torino
University Politehnica of Bucharest
University of Cyprus
Complutense University of Madrid (UCM)
AESOP (Association of European Schools of Planning)
Paris 8 University



Foundations

Heinrich Böll Foundation
Goethe-Institute Athens
Greek National Opera (GNO)
John S. Latsis Public Benefit Foundation
Stavros Niarchos Foundation
Bodossaki Foundation (Active Citizens Fund)



NGOs and Cooperatives

DIOGENIS NGO
WWF Greece
Dipylon Society NPO
DOCK AMKE
SOCIALITY
LUDD
HERMES NGO
Vouliwatch
Ohi Pezoume Performing Arts Non-Profit Company
S-NODI
APPUII